

**This file contains the instructions for formatting your extended abstract: title should be in Times New Roman 14, bold, single spaced, centered**

*(one line spacing, with font size 14)*

F. Luna<sup>1</sup>, B. Crown<sup>2</sup> and M. Hopkirk<sup>1</sup> *(Times New Roman 10, centered)*  
*(one line spacing, with font size 10)*

1) A superscript with different numbers in the authors list will refer to the different affiliations listed separately. For example:

*Institute of Electrical Engineering, Slovak Academy of Sciences, 841 04 Bratislava, Slovakia*

2) *Instituto de Sistemas Optoelectrónicos y Microtecnología, ETSI Telecomunicación, Universidad Politécnica de Madrid, 28040 Madrid, Spain, ( Times New Roman 10, italic, single spaced, centered )*  
*(two line spacing, with font size 11)*

The page format should be as follows (4 pages maximum): A4 standard (21x 29.7 cm); margins: from top=3cm; from bottom=3cm; from left=1.5cm; from right=1.5cm.

Paragraphs should start 5 mm inside. The text should be justified, Times New Roman 11, and single spaced.

Headers and page numbers will be added by the Editorial Team, so please generate a text without page numbers or headers and footers. References in the text will appear delimited by square brackets [n] with the same formatting as the text.

References will be listed at the end of the document with the same formatting as the text, and should not occupy the space of the footer (see below).

If the authors wish, they can add paragraph titles in Times New Roman 11, italic, bold, aligned with margins. With one line free of text above. For example:

***Experimental***

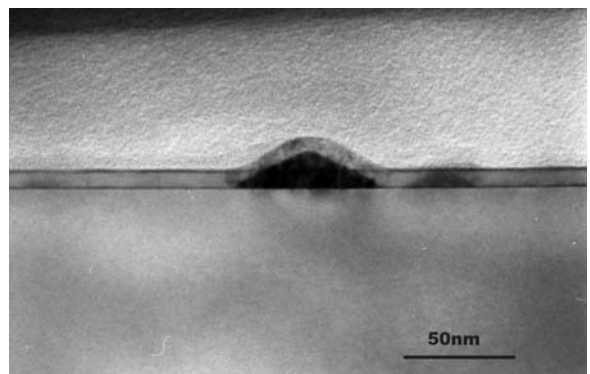
The samples were grown by MOVPE and not by MBE.

***Figure captions***

Should be written in Times New Roman 11, italic according to the following style: *Fig.1 Figure captions should be inserted right below the figure.*

***Figures***

The figures should be in gray scale. Figures will be inserted within the margins with a reasonably high resolution: 300dpi at least. The main text should be at least 3mm away from the figures (in any direction).



*Fig.1 Figure captions should be inserted right below the figure.*

***Document format***

The document should be submitted in **DOC** format. We would like to ask authors if they could send us their papers also in the pdf format. This will help the Editorial team to correct small discrepancies in the formatting.

*(One line free of text above the reference title.)*

***References*** *(Times New Roman 11, italic, bold, justified)*

[n] with standard citation style: H. Li, T. Mei, D.H. Zhang, W.J. Fan, S.F. Yoon and W.K. Loke: Journal of Crystal Growth, **288**, (2006), 36-39 Volume number in bold. Single spaced.